

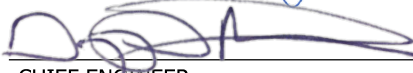


INDEX	
SHEET NO.	SUBJECT
1	PCCP Joints Index
2	Sawed Joints and Joint Sealant
3	D-1 Contraction Joint Details
4	Transverse Construction Joint Details
5	Longitudinal Joint Details

GENERAL NOTES:

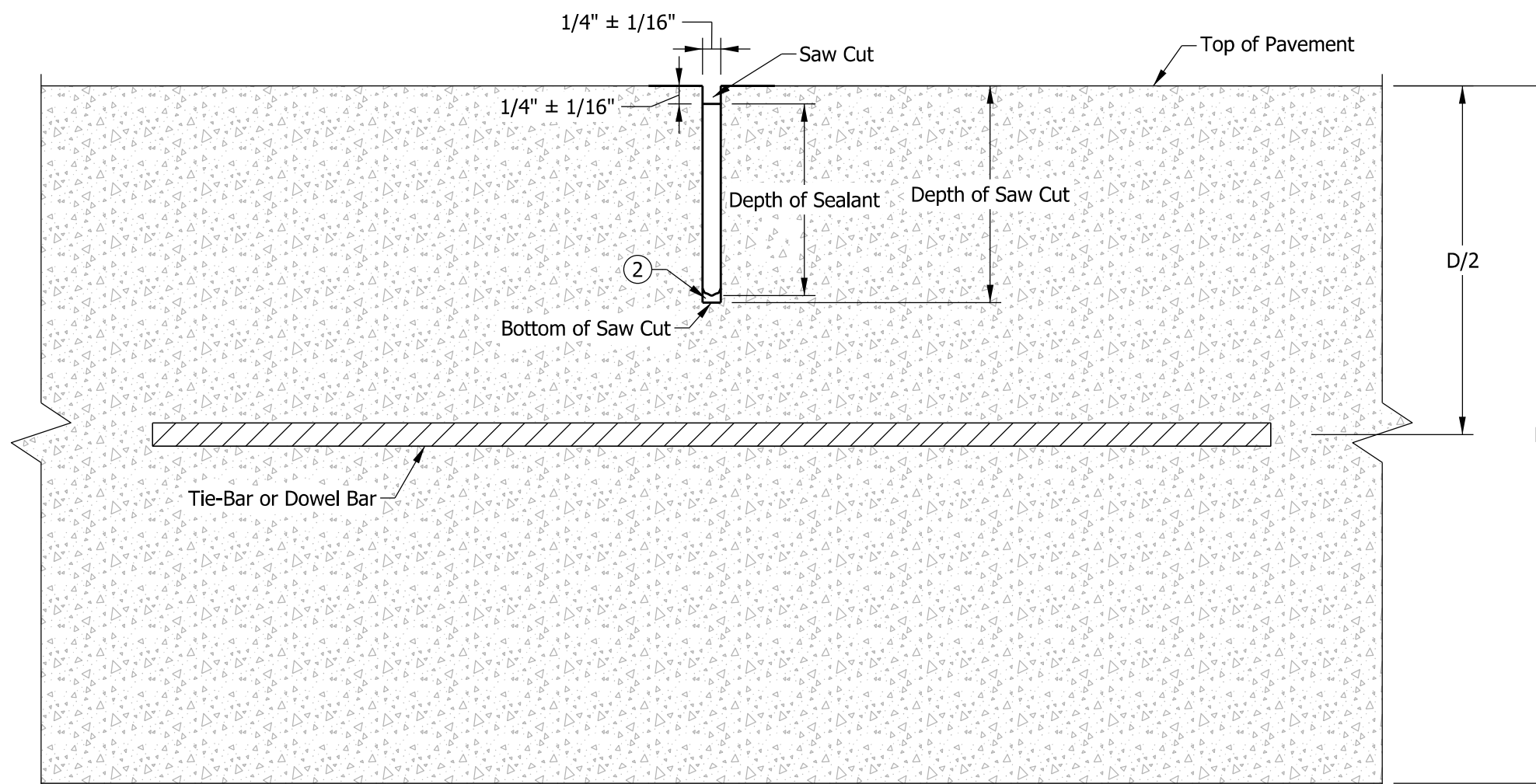
1. Dowel bars shall be epoxy coated.
2. Tie-bars shall be epoxy coated.

INDIANA DEPARTMENT OF TRANSPORTATION	
PCCP JOINTS INDEX SEPTEMBER 2020	
STANDARD DRAWING NO. E 503-CCPJ-01	
	 03/10/20 DESIGN STANDARDS ENGINEER DATE
	 05/08/20 CHIEF ENGINEER DATE

TYPE OF JOINT	DEPTH OF SAW CUT	DEPTH OF SEALANT
Longitudinal Joint	D/3	2" (min.)
D-1 Contraction Joint	D/3	2" (min.)
Retrofit Transverse Joint (3)	1"	Bottom of Saw Cut
Transverse Construction Joint	1"	Bottom of Saw Cut
Longitudinal Construction Joint	1"	Bottom of Saw Cut

NOTES:

1. Multiple passes of sealant may be required.
2. Backer rod shall not be installed.
3. For Retrofit Transverse Joint details, see Standard Drawing Series E 506-CCPP.

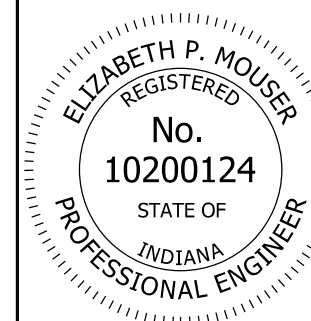


D = PCCP Thickness

INDIANA DEPARTMENT OF TRANSPORTATION

SAWED JOINTS
AND
JOINT SEALANT
SEPTEMBER 2026

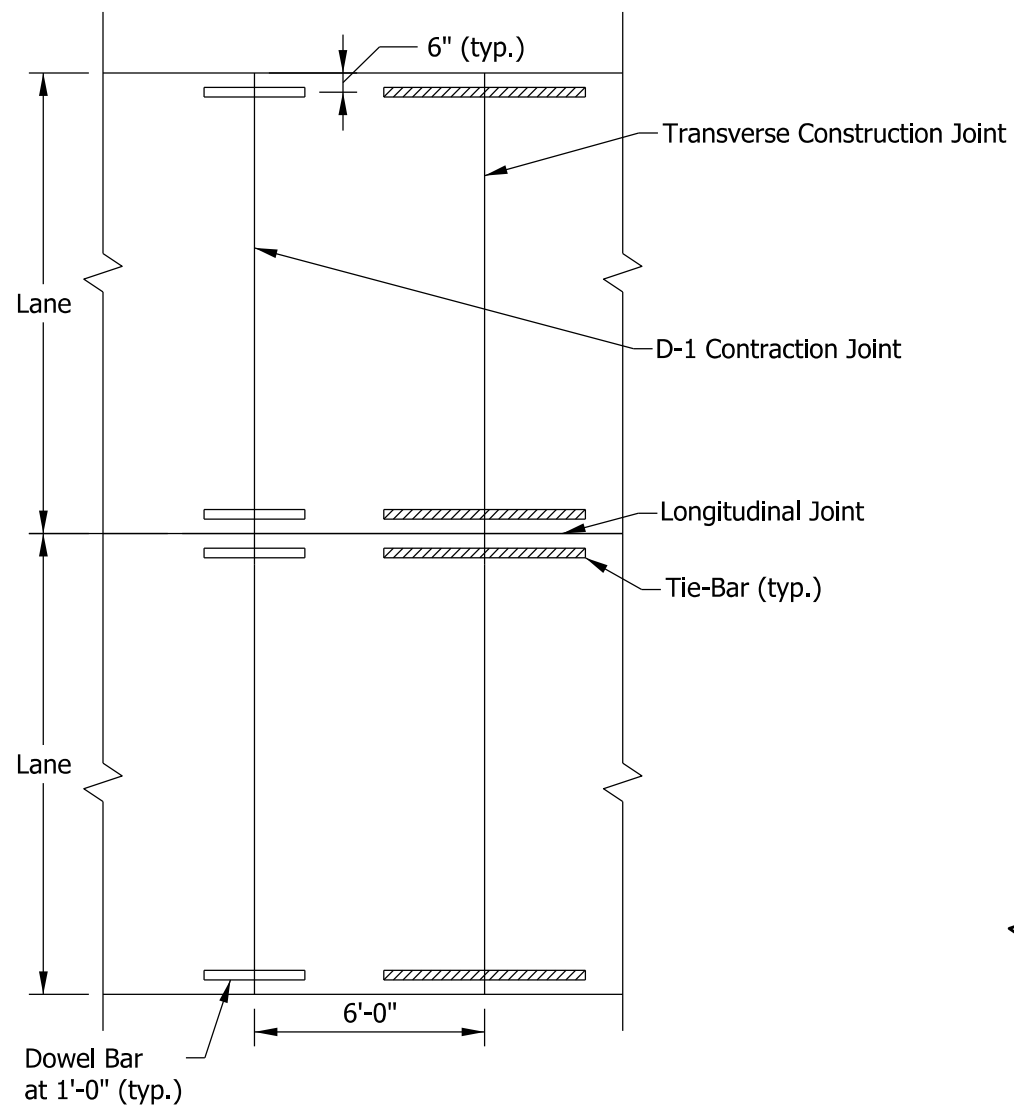
STANDARD DRAWING NO. E 503-CCPJ-02



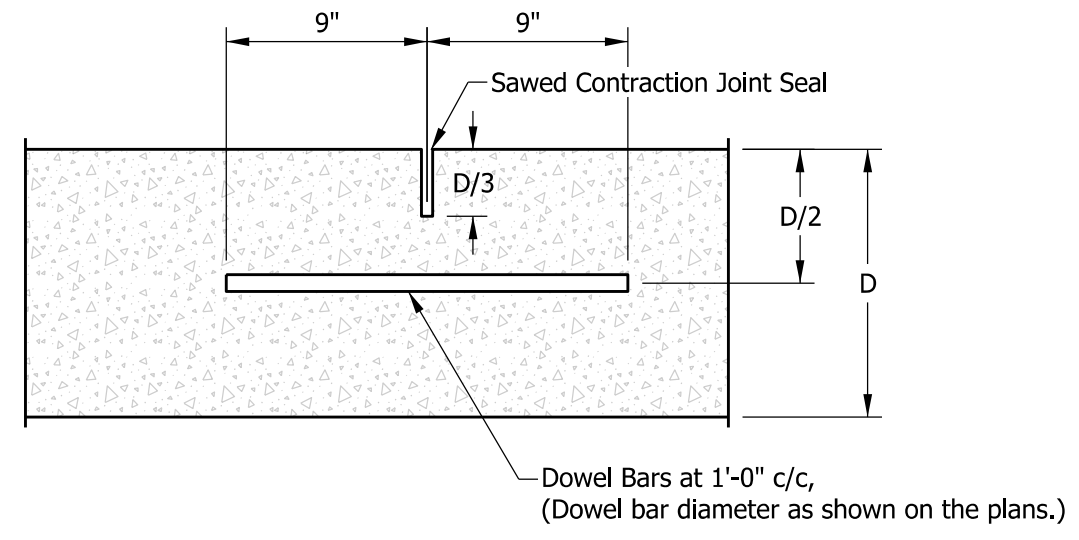
Elizabeth P. Mouser 4/13/2026
DESIGN STANDARDS ENGINEER DATE

[Signature] 04/13/2026
CHIEF ENGINEER DATE

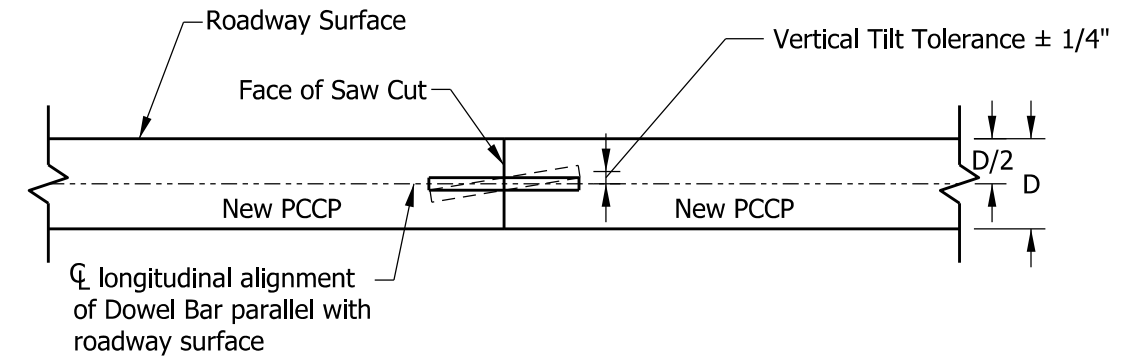
**TRANSVERSE AND LONGITUDINAL
SAW CUT WITH HOT POURED SEALANT**



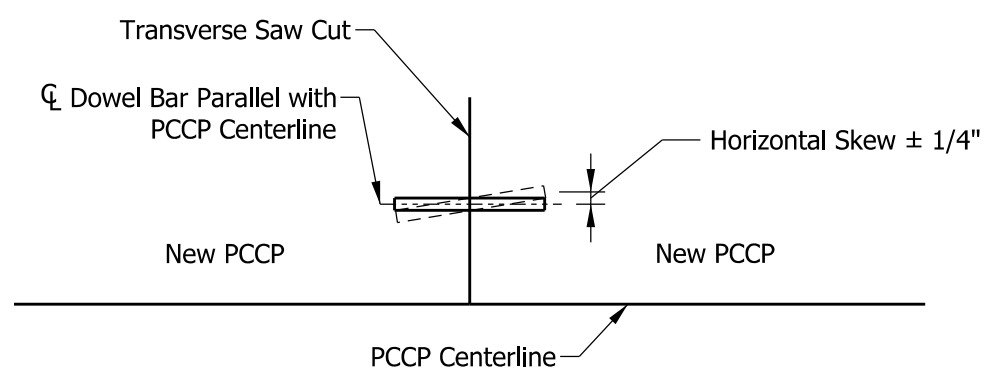
PLAN



TYPE D-1 CONTRACTION JOINT
LONGITUDINAL SECTION THROUGH PCCP



ELEVATION VERTICAL TILT



PLAN HORIZONTAL SKEW

INDIANA DEPARTMENT OF TRANSPORTATION

D-1 CONTRACTION JOINT DETAILS

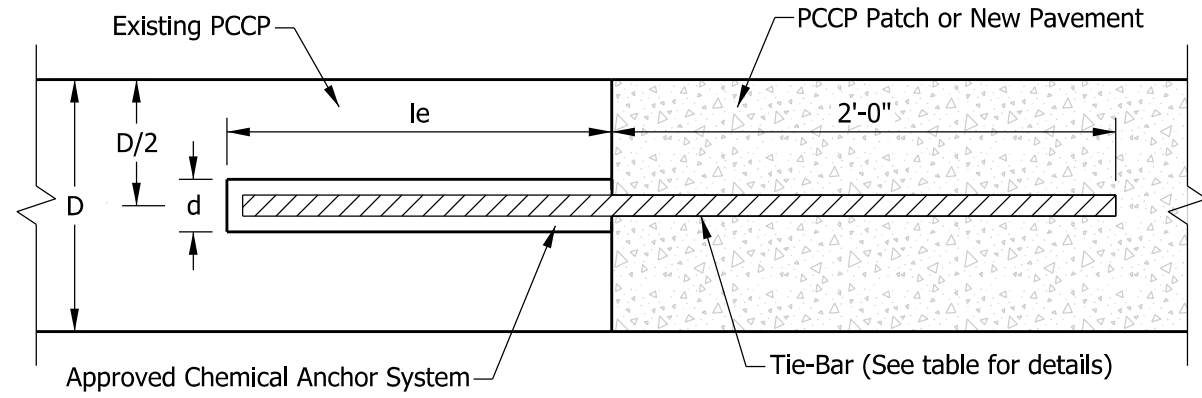
SEPTEMBER 2020

STANDARD DRAWING NO. E 503-CCPJ-03



Elizabeth W. Phillips 03/10/20
DESIGN STANDARDS ENGINEER DATE

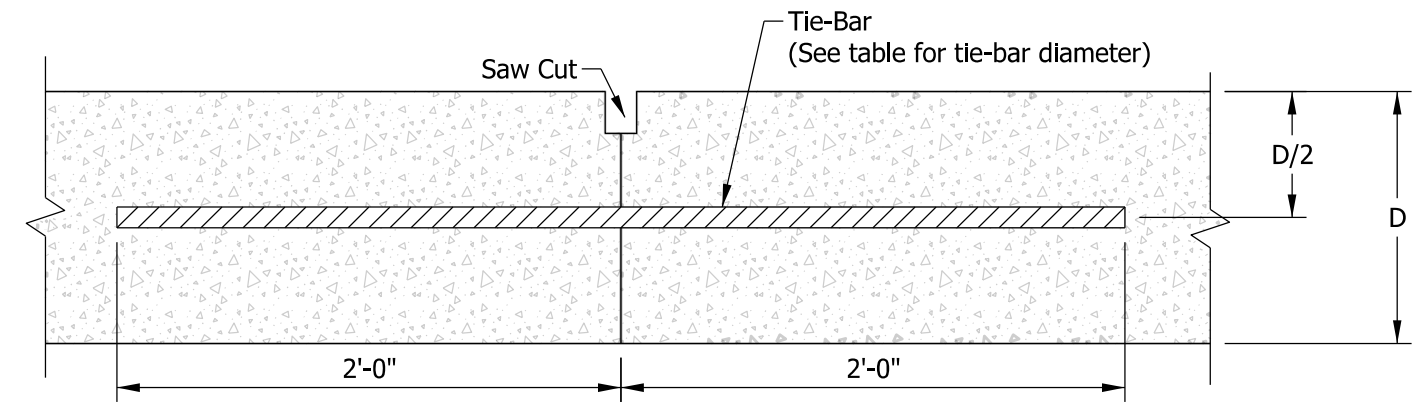
[Signature] 05/08/20
CHIEF ENGINEER DATE



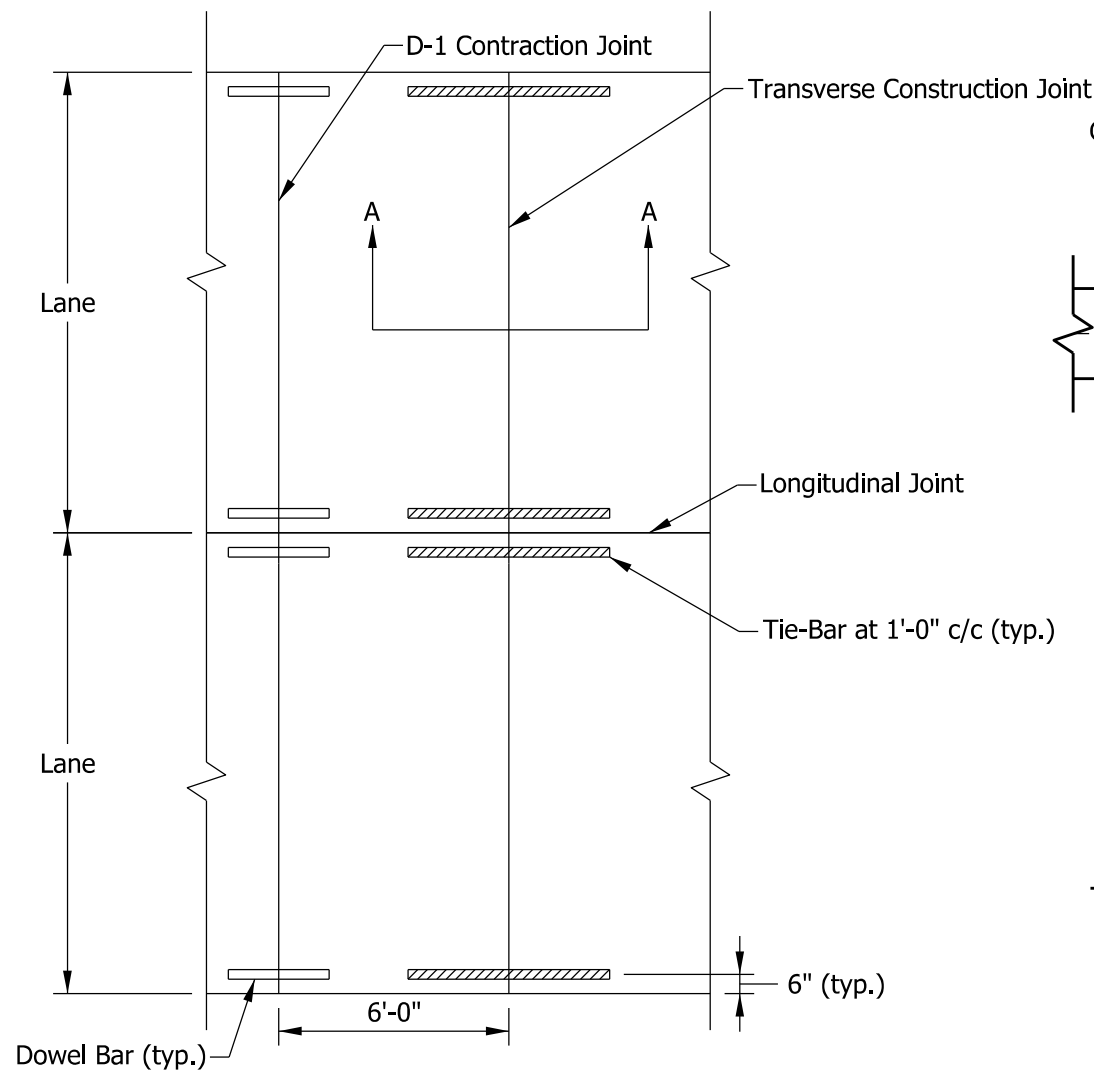
**SECTION A-A
(RETROFITTED TIE-BARS)**

NOTE:

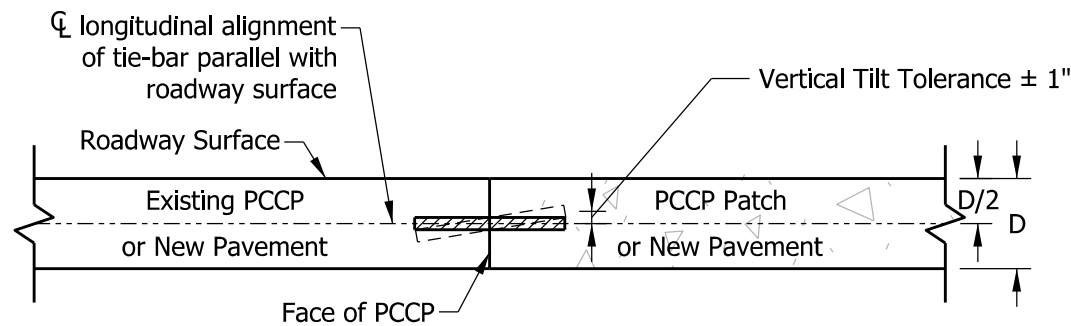
1. Diameter of drilled hole (d) shall be in accordance with the chemical anchor system manufacturer's instructions.



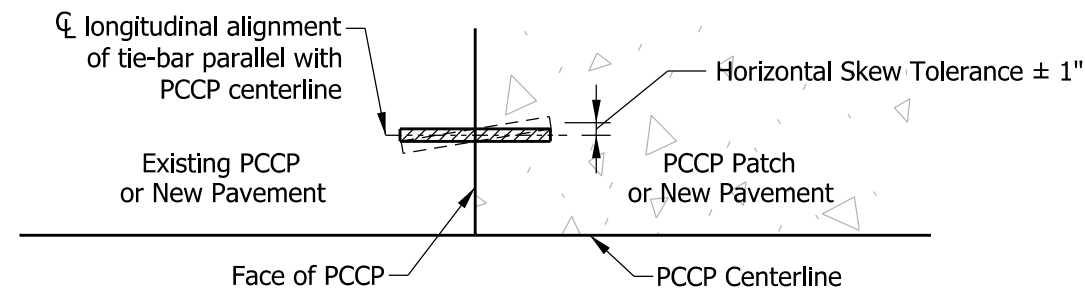
**SECTION A-A
(TIE-BARS PLACED IN PLASTIC CONCRETE)**



PLAN



**ELEVATION
VERTICAL TILT**



**PLAN
HORIZONTAL SKEW**

TIE-BAR SIZES FOR TRANSVERSE CONSTRUCTION JOINT		
Pavement Thickness, D	Tie-Bar Size	Min. l_e (Retrofit)
Less than 9"	#5	1'-0"
9" through 12"	#8	1'-8"
Greater than 12"	#10	2'-0"

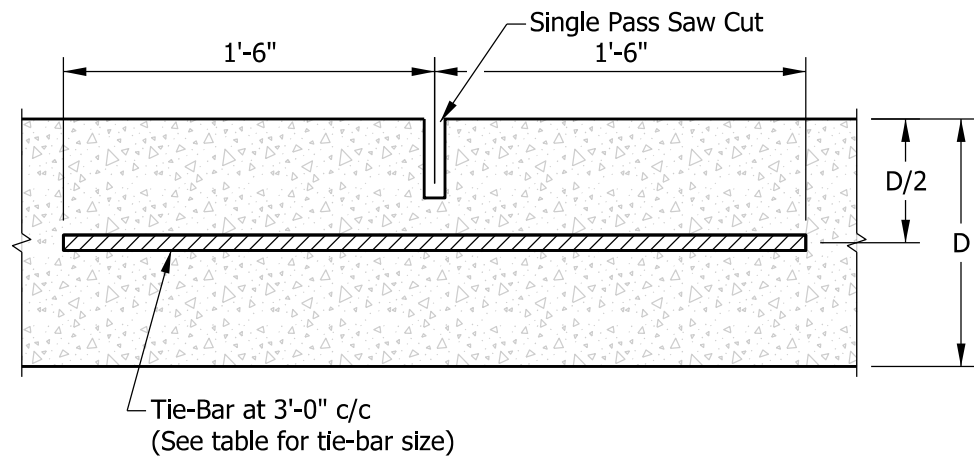
INDIANA DEPARTMENT OF TRANSPORTATION

TRANSVERSE CONSTRUCTION JOINT DETAILS

SEPTEMBER 2020

STANDARD DRAWING NO. E 503-CCPJ-04

	<p style="text-align: right;"><i>Elizabeth W. Phillips</i> 03/10/20 DESIGN STANDARDS ENGINEER DATE</p> <p style="text-align: right;"><i>[Signature]</i> 05/08/20 CHIEF ENGINEER DATE</p>
--	--

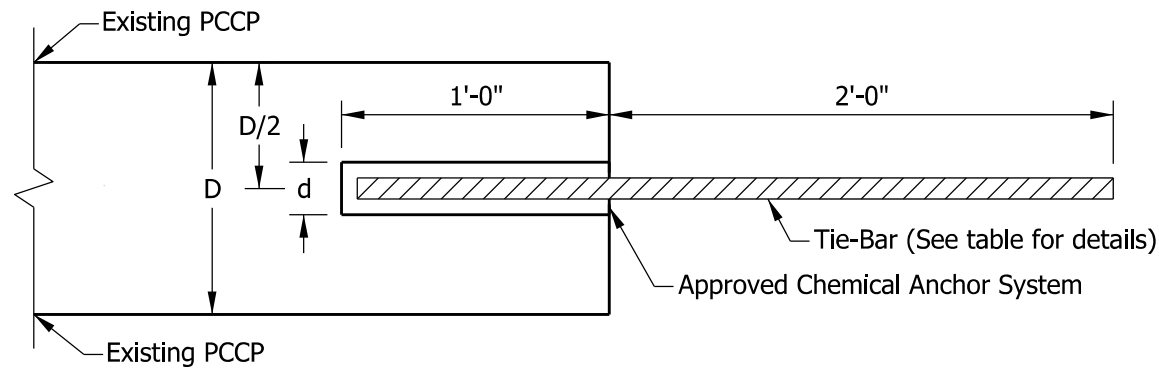


TIE-BAR SIZES FOR LONGITUDINAL JOINT	
Pavement Thickness, D	Tie-Bar Size
Less than or equal to 9"	#5
Greater than 9"	#6

NOTE:

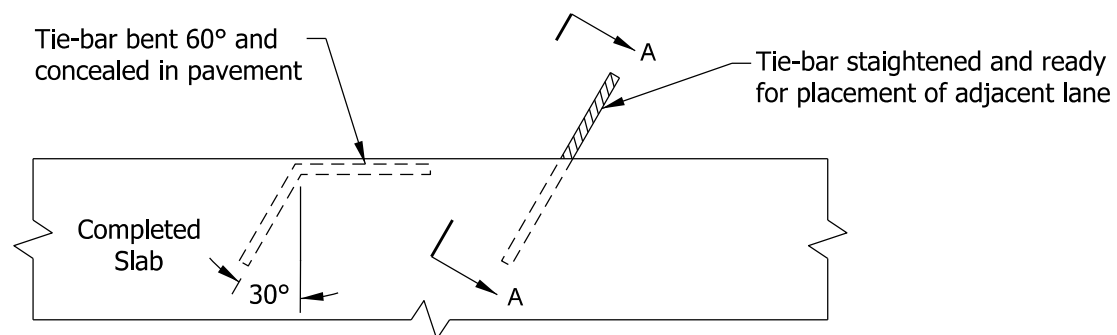
1. Diameter of drilled hole (d) shall be in accordance with the chemical anchor system manufacturer's instructions.
2. For retrofitted tie-bar skew and tilt tolerances see 503-CCPJ-04.

LONGITUDINAL JOINT TRANSVERSE SECTION THROUGH PCCP

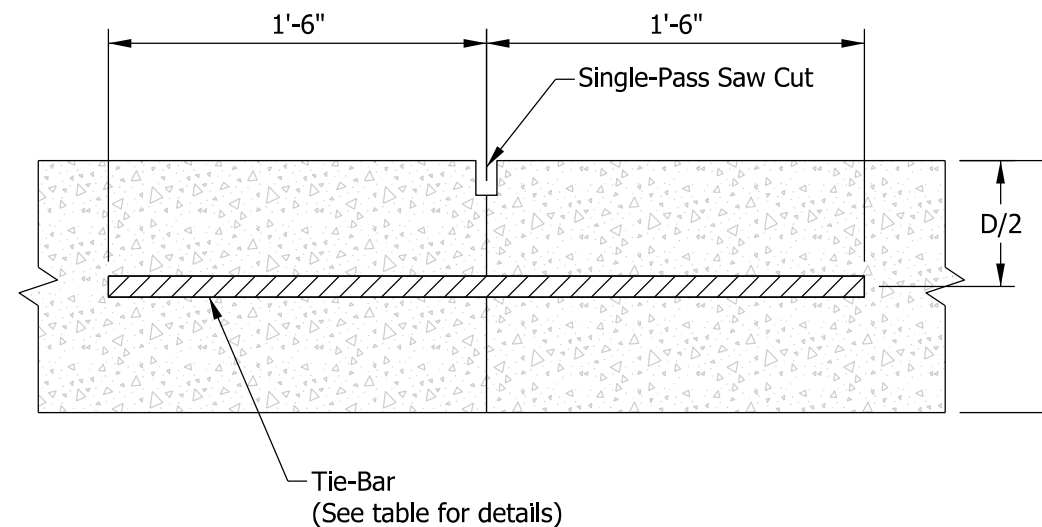


TIE-BAR SIZES FOR LONGITUDINAL CONSTRUCTION JOINTS		
Pavement Thickness, D	Tie-Bar Size	Spacing
Less than 9"	#5	3'-0" c/c
9" through 12"	#6	3'-0" c/c
Greater than 12"	#6 or #7	2'-0" c/c 3'-0" c/c

LONGITUDINAL CONSTRUCTION JOINT TRANSVERSE SECTION THROUGH PCCP (RETROFITTED TIE-BARS)



LONGITUDINAL CONSTRUCTION JOINT PLAN VIEW (BENT TIE-BAR PLACED IN PLASTIC CONCRETE)



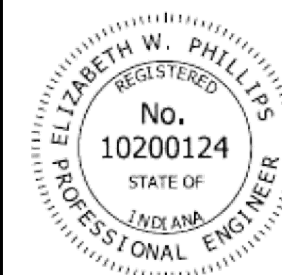
SECTION A-A

INDIANA DEPARTMENT OF TRANSPORTATION

LONGITUDINAL JOINT DETAILS

SEPTEMBER 2020

STANDARD DRAWING NO. E 503-CCPJ-05



Elizabeth W. Phillips 03/10/20
DESIGN STANDARDS ENGINEER DATE

[Signature] 05/08/20
CHIEF ENGINEER DATE